

POMPANO TERRACE

A SUBDIVISION IN SECTIONS 26 & 35 T48S R42E.

POMPANO, BROWARD CO. FLORIDA.

POMPANO TERRACE CORPORATION.

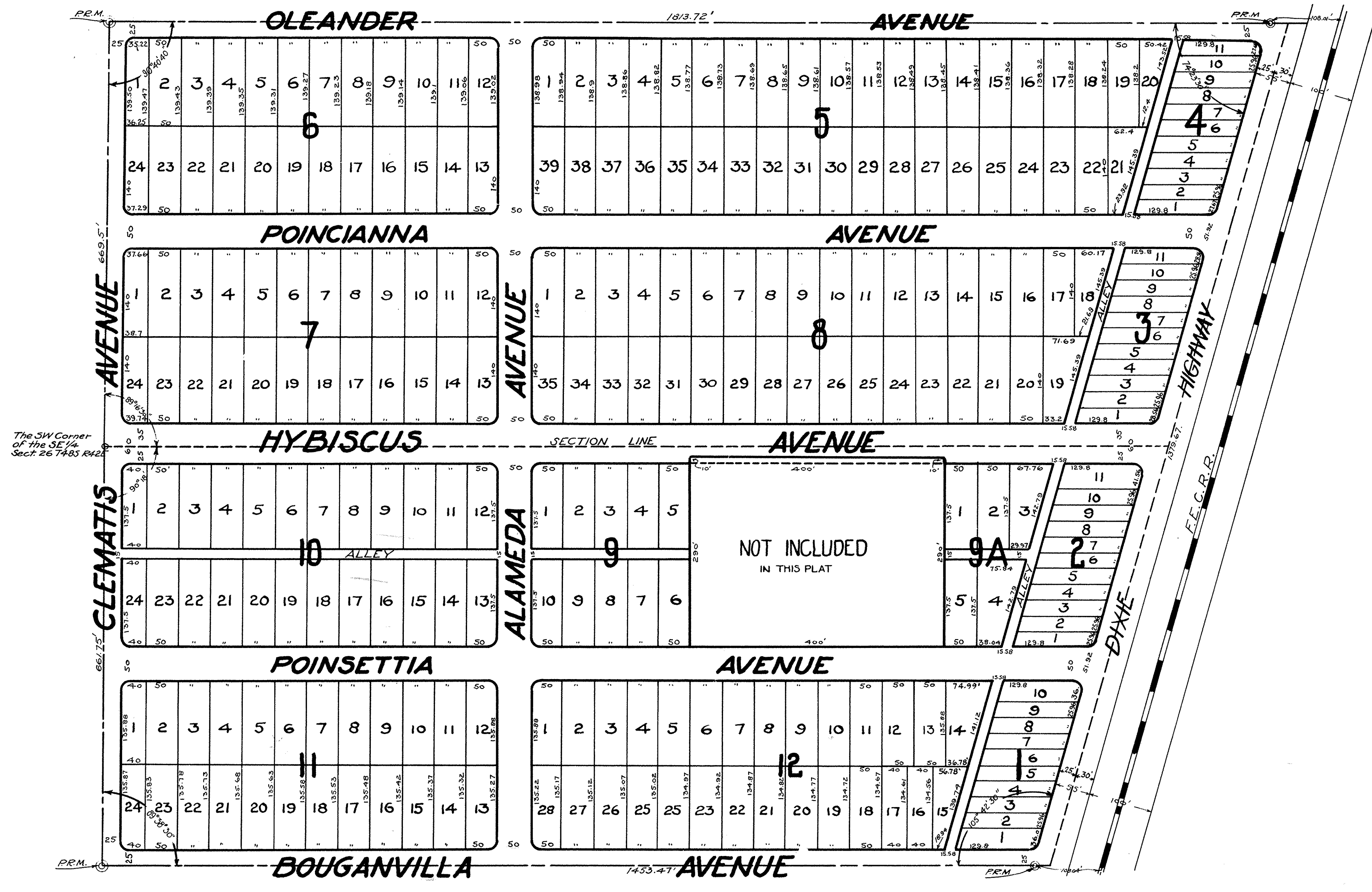
OWNERS & DEVELOPERS.

J S Rhine Inc.

Civil & Consulting Engineers.

FORT LAUDERDALE, FLA.

SCALE 1"=100'



85151
STATE OF FLORIDA
COUNTY OF BROWARD
This instrument was recorded on the 10th day of March A.D. 1926 at 10:00 A.M. and recorded in Book 10 of Public Records, Page 11.
RECORDED
M. J. Lerner
Notary Public
Broward County, Florida

ENGINEERS NOTE

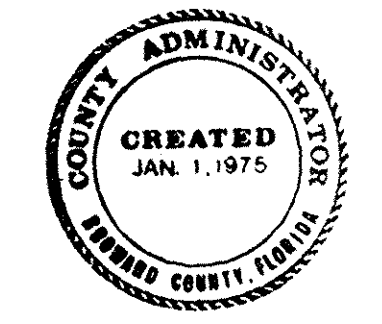
All corner radii 15' except where otherwise noted.
All dimensions are to an intersection of the tangents produced.
A 3' strip of land is reserved from the rear of every lot for the installation of public utilities.

STATE OF FLORIDA
COUNTY OF BROWARD

I HEREBY CERTIFY that this is a true and correct copy of a map or plat as the same appears of record in Plat Book 10 at Page 11 of the public record of Broward County Florida. WITNESS my hand and official seal in the City of Fort Lauderdale, FL this 28 day of FEB. A.D. 1926.

FEB. 1926.

A. HESTER, County Administrator
By *Richard Barrow* D.C.



DESCRIPTION

A RESUBDIVISION OF THE CHILLINGWORTH ADDITION TO THE TOWN OF POMPANO FLORIDA, AS RECORDED IN BOOK 2, PAGE 5 PALM BEACH COUNTY TRANSCRIPTS, BROWARD CO. RECORDS.

STATE OF FLORIDA
COUNTY OF BROWARD

Know all men by these presents that the Pompano Terrace Corporation, a corporation under the laws of the State of Florida, writers of the lands described herein, have caused the same to be surveyed and plotted according to the attached plat, and as hereby dedicate to the perpetual use of the public all streets, avenues, and alleys as shown hereon. In testimony whereof, said corporation has caused this instrument to be signed by its President, attested by its Secretary, and the seal of said corporation to be affixed this 18 day of February A.D. 1926.

George W. Merrill Vice President
George W. Merrill Secretary

STATE OF FLORIDA
COUNTY OF BROWARD

On this 18 day of February A.D. 1926, personally appeared before me, a Notary Public, George W. Merrill, Sec., and L.A. Merrill, Sec., officers of the Pompano Terrace Corporation, who acknowledged to me the execution of the foregoing instrument of dedication, by and with the authority of the Board of Directors of said corporation.

George W. Merrill
Notary Public State of Florida at Large
My commission expires Jan. 21, 1930

This is to certify that J. S. Rhine, a licensed Civil Engineer, registered under the law of the State of Florida, have surveyed and plotted the lands described herein according to the plat hereto, and that the attached plat is a true representation of the actual field work done by me, and the P.R.M.s have been set as shown.

J. S. Rhine
Civil Engineer
Florida Registry #140

Approved for record this 5th day of March A.D. 1926

E. J. Hartman (SEAL)
City Engineer
City of Pompano Fla.

Approved for record this 16 day of March A.D. 1926

W. M. Hopkins (SEAL)
County Engineer
Broward Co. Fla.

STATE OF FLORIDA
COUNTY OF BROWARD

This is to certify that the attached plat conforms to an Act to regulate the making of surveys and filings to record of maps and plots in the State of Florida, approved by the Governor the 11th day of June A.D. 1925.

W. M. Hopkins
County Engineer
Broward Co. Fla.